

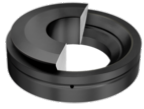


## GE25-AX

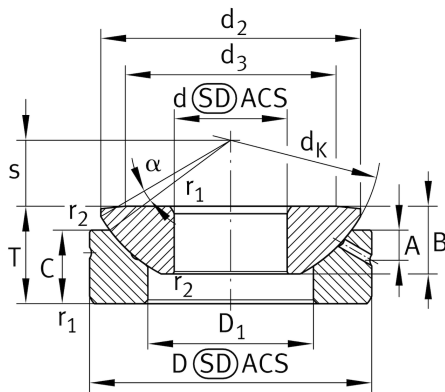
### Spherical plain bearing

Schaeffler ID:  
0066541770000

Axial spherical plain bearing, requiring maintenance, sliding contact surface: steel/steel



#### Technical information



#### Main Dimensions & Performance Data

d	25 mm	Inner diameter bearing
D	62 mm	Outside diameter bearing
T	22.5 mm	Height
C <sub>a</sub>	129,000 N	Basic dynamic load rating, axial
C <sub>0a</sub>	646,000 N	Basic static load rating, axial
	0.385 kg	Weight

#### Dimensions

d <sub>K</sub>	66 mm	Ball diameter
d <sub>2</sub>	57.5 mm	Connection measure Inner ring
d <sub>3</sub>	45 mm	Front surface diameter of shaft washer
D <sub>1</sub>	34.5 mm	Inner diameter of housing washer
B	16 mm	Width Inner ring
C	17 mm	Width Outer ring
s	14 mm	Plane Surface Spacing
A	6 mm	Distance lubrication Bore
α	7 °	Tilt angle
d <sub>OT</sub>	0 mm	Bore diameter bearing, upper tolerance
d <sub>UT</sub>	-0.01 mm	Bore diameter bearing, lower tolerance
D <sub>OT</sub>	0 mm	Outer diameter, upper tolerance
D <sub>UT</sub>	-0.013 mm	Outside diameter, lower tolerance
T <sub>OT</sub>	0 mm	Height, upper tolerance
T <sub>UT</sub>	-0.4 mm	Height, lower tolerance
C <sub>OT</sub>	0 mm	Width outer ring, upper tolerance
B <sub>OT</sub>	0 mm	Width inner ring, upper tolerance
B <sub>UT</sub>	-0.24 mm	Width inner ring, lower tolerance

**Mounting dimensions**

$r_{1\text{min}}$	1 mm	Edge Spacing
$r_{2\text{min}}$	0.3 mm	Edge Spacing
$d_{a\text{max}}$	45 mm	Connection measure Inner ring
$D_{a\text{min}}$	39 mm	Housing Connection Diameter

**Temperature range**

$T_{\text{min}}$	-60 °C	Operating temperature min.
$T_{\text{max}}$	200 °C	Operating temperature max.